

## **Quick Recovery For MS Backup**

**How Quick Recovery Works**

**Who Suffers most**

**Features**

**Recovery matrix**

**When is a disk said to be logically**

**bad 100% data recovery is possible if**

**Some concepts and Myths - many don't know**

**Main factors causing data loss**

**Scope of work**

**Recovery Modes**

**Limitations Quick Recovery**

**Frequently asked Questions**

### Quick Recovery - An automated data recovery software

Quick Recovery is a do-it-yourself data recovery software. Quick Recovery is designed to be very easy to use and has similar operation for FAT, NTFS, Linux-Ext2/Ext3 or Novell -NFS systems. There are just two steps to perform the complete operation. Analysis and save. Analysis is the most important aspect of data recovery. Quick Recovery's unique Guided File Excavation Technology (GFETCh) helps in locating files and folders lost behind overwritten partitions too.

### How Quick Recovery Works?

There are two operation steps: Analysis : This step involves the complete diagnosis and search operation. Quick Recovery searches for the file system information from the beginning of the disk and reverse calculates the disks file structure. The various file system information comprises of partition tables, boot records, NTFS boot records, file allocation tables, master file allocation table folder information, volumes and ext2FS super block records. Quick Recovery also finds previously existed partitions. The analysis is to be followed in three modes. First the auto mode has to be run. This mode quickly analyses the disk and displays the files. Most of the cases are resolved in this mode itself, Cases where partition, boot records, one FAT or MFT meta tags is damaged then Quick Recovery goes into Auto Mode. In cases where auto mode does not show the required files to be recovered, then choose Advanced mode. This is an exhaustive method where all lost folders/files are excavated and our proprietary algorithm (GFETCh) is used. This mode is to be used for extreme cases like formatted drives, root folder corruption or long lost folders. The third mode is the professional mode that is to be used by computer professionals or anyone who needs to learn more about the disk. All modes of recovery are read only, safe to use and no damage or write operations are performed using quick Recovery. Display & Save: After the analysis, all files and folders will be displayed. Select the folders/files that are to be recovered and save them to a working disk or floppies.

### Who Suffers most ?



### Features:

- Open multiple corrupt BKF file at a time.
- Option to Save recovered files in compressed format.
- BKF Recovery supports unicode characters (Non English Characters also). BKF Recovery includes advance Search option to quickly locate files (by extension, size, type).
- Add to Cart option to save only selective files.
- Save Catalog & Open Catalog feature - To resume bkf recovery process later & to save time.
- Mail Settings Feature - to send recovered files as an email attachment.

### Recovery matrix:

- Deleted files
- Files from formatted disks
- Disk not booting
- Lost partitions
- Inaccessibility due to bad sectors
- Partitions have been recreated
- OS not loading
- Virus corrupted drives
- FAT/MFT/Super Block damage
- MBR/DBR destroyed

### When is a disk said to be logically bad?

A disk is said to be logically bad if it is detected by the motherboard but system displays errors like:

- Invalid drive specification
- Invalid partition table
- Missing operating system ROM basic error
- Drive not ready
- Invalid media type
- error Sector not found
- Data error reading file
- File allocation table/MFT/Inodes damaged File not found/missing or deleted accidentally.

The causes of these errors could be because of varied reasons as virus attacks, user negligence, sudden voltage surge, faulty system tools, operating system corruption etc. User negligence is the most common. Apart from these accidentally deleting files, accidentally formatting drive, incorrect data transfer, incorrect method of backup etc. are also the reasons of data loss.

100% data recovery is possible if;

- Errors like Invalid partition table, Invalid media type error, invalid drive specification, general failure reading drive etc are displayed.
- Or the problem with Partition Table, Boot Sector and Root Directory.
- Files are accidentally deleted.
- Operating system not booting.
- Disk has been formatted and small files are to be recovered.
- Chernobyl (April 26 virus attack).
- Drive is not shown or accessible.

Other conditions when data may be recovered partially if not completely;

- A large deleted file is to be recovered.
- Disk has been formatted but nothing is overwritten.
- Messages like sector not found, data error reading disk, file allocation table bad are shown by the system.
- The user has taken some action after the data loss occurred, e.g scandisk or any utility which can write something on hard disk.
- OS is re-installed or restored backup after accidentally formatting the disk or accidentally deleting data.
- Running system repairing tools to repair the operating system corruption.
- Recreating partitions making a FAT 16 hard disk FAT 32 or NTFS etc.
- Data loss occurs after using disk repartitioning/resizing utilities.

Some concepts and Myths - many don't know.

- ✓ Switch off the computer as soon as data is lost, whatever reason it may be. Users still keep working on it thinking they will recover it later.
- ✓ A file deleted from a folder is physically present there and only its entry from FAT/MFT is reset. The deleted file will be there until it is overwritten. Even if you copy some data to another folder, this deleted file may get overwritten! A folder may be somewhere and files under it may be somewhere else, they are linked by the FAT/MFT.
- ✓ Viruses may infect a computer today, but they affect harm on the system many days later or even years later. They require this time for spreading themselves. Some people think that their system has crashed because a virus came at that time only.
- ✓ Not all viruses corrupt data files. Most viruses corrupt only system files and partition etc.
- ✓ Data can be recovered in such instances too.
- ✓ When a disk does not boot, using Fdisk to create new partition will not bring data back. This will cause even more damage to data.
- ✓ People think data cannot be recovered after formatting a disk or changing partition. High level formatting will only reset the FAT and root directory on the disk, but data area remains intact, only to be recovered by experts like us.
- ✓ The recovery CD provided by many computer manufacturers is not for recovering data, but only for automatically formatting the disk and automatically re-installing the operating system etc.

## Quick Recovery For MS Backup - BKF Recovery

### The Problem:

- Accidental file deletion
- Accidental partition format
- Accidental partition deletion
- Accidental Formatting
- System Area Corruptions due to viruses
- Partitioning changed accidentally.
- Partition corruption
- Corruption in directory structure
  - Cross linking in File allocations
- Incorrect usage of repair utilities
- Lost folders after re-installing OS
- Folder lost after upgrading OS
- Operating system malfunction
- Bad sectors in 0 track
- OS crashed after file system conversion
- Files deleted after backup that never happened
- Solution: Quick Recovery - Automated Data Recovery Software

### Main factors causing data

loss User negligence  
Virus attacks  
Incorrect usage of repair software  
Lack of knowledge in using disk  
management tools Sabotage  
Forgotten password  
Voltage surge  
Incorrect shutdown

### Scope of work:

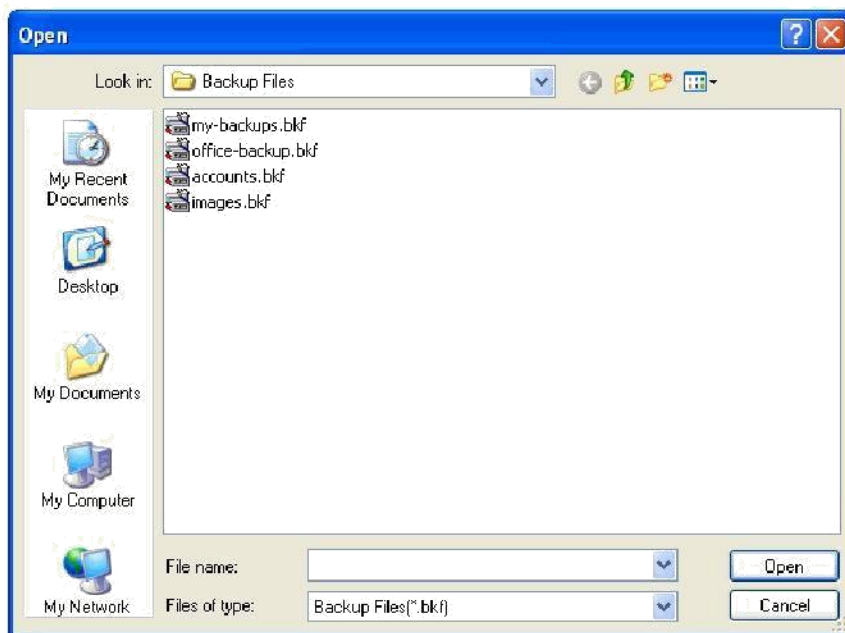
Deleted files  
Files from formatted disks  
Disk not booting  
Lost partitions  
Inaccessibility due to bad sectors  
Partitions have been recreated  
Partitioning has been changed  
File system changed  
OS not loading  
Virus corrupted drives  
FAT/MFT/Super Block damage  
MBR/DBR destroyed

## How Quick Recovery For MS Backup - BKF Recovery Works?

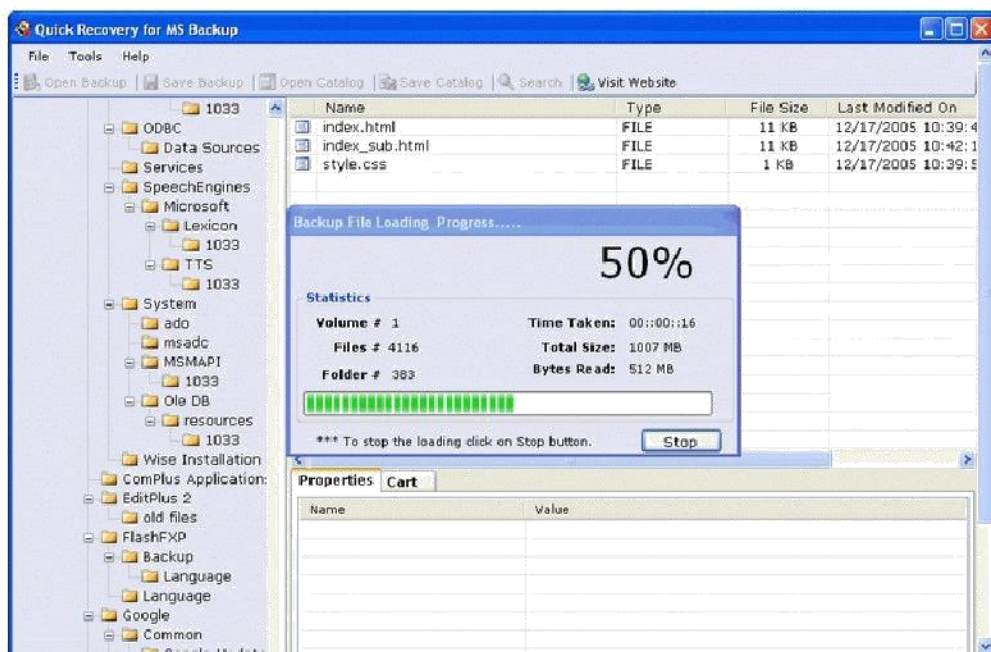
### Quick Recovery for MS Backup - Load Corrupt Backup Files

Loading or Open Ms Backup files is the Prime step to repair corrupt Ms Backup Files. Open corrupt Backup files using button from the toolbar.

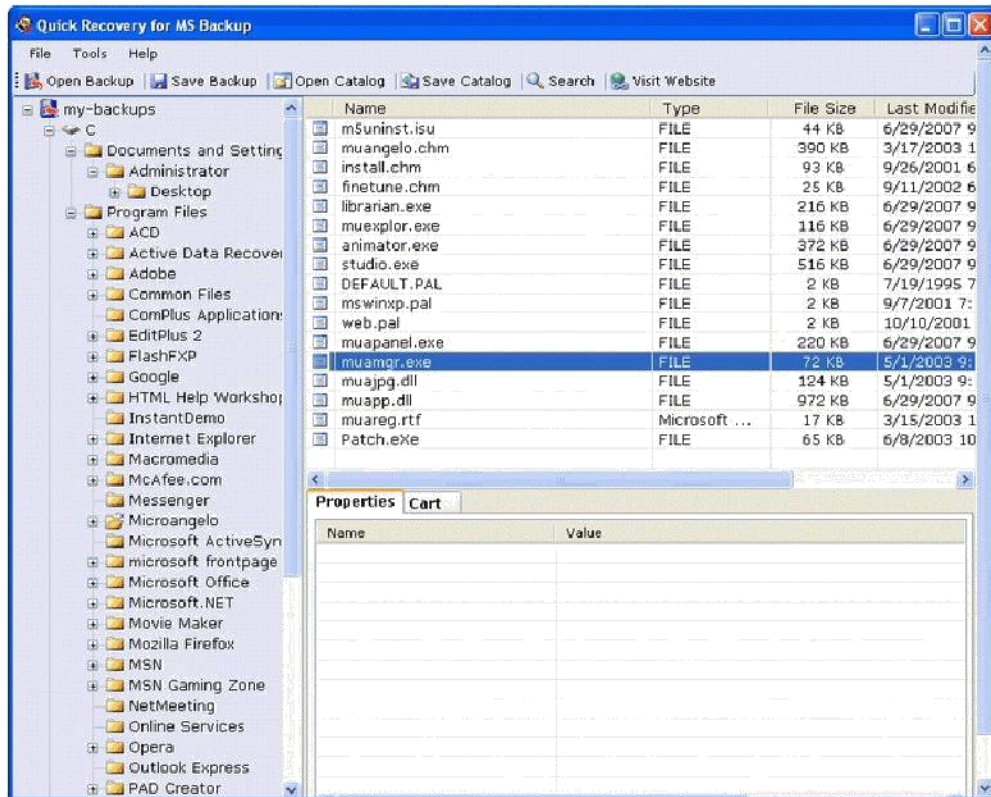
After the above instance Quick Recovery for MS Backup will display the following screen:



Select your corrupt BKF files and click Open. After this Software will start the loading process:



After the above instance Quick Recovery for MS Backup will Load the corrupt MS Backup files successfully. Quick Recovery for MS Backup will display the following screen as follows:



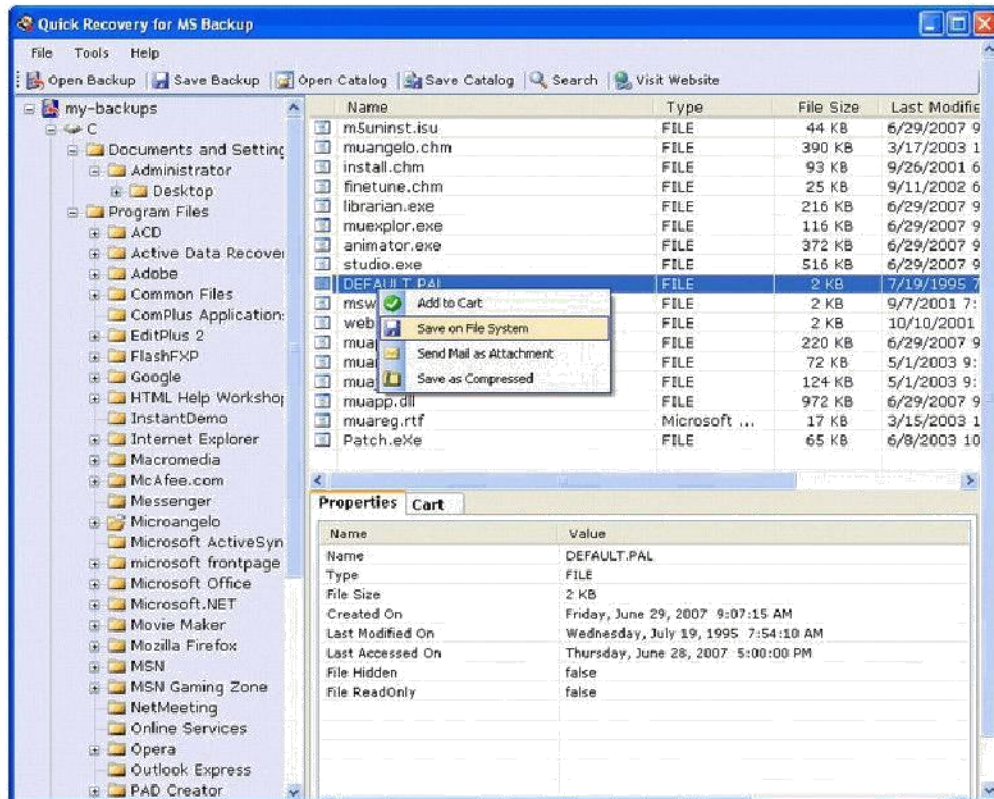
You can add or load more than one corrupt Ms Backup Files by using  button.



Quick Recovery for MS Backup supports two methods to save files & folders as follows: Saving individual directory

Saving single or multiple files from same location Saving Individual Files

Quick Recovery for MS Backup supports to save multiple file from same location. Save multiple file as follows:



Select files from the right upper pane of the above window.

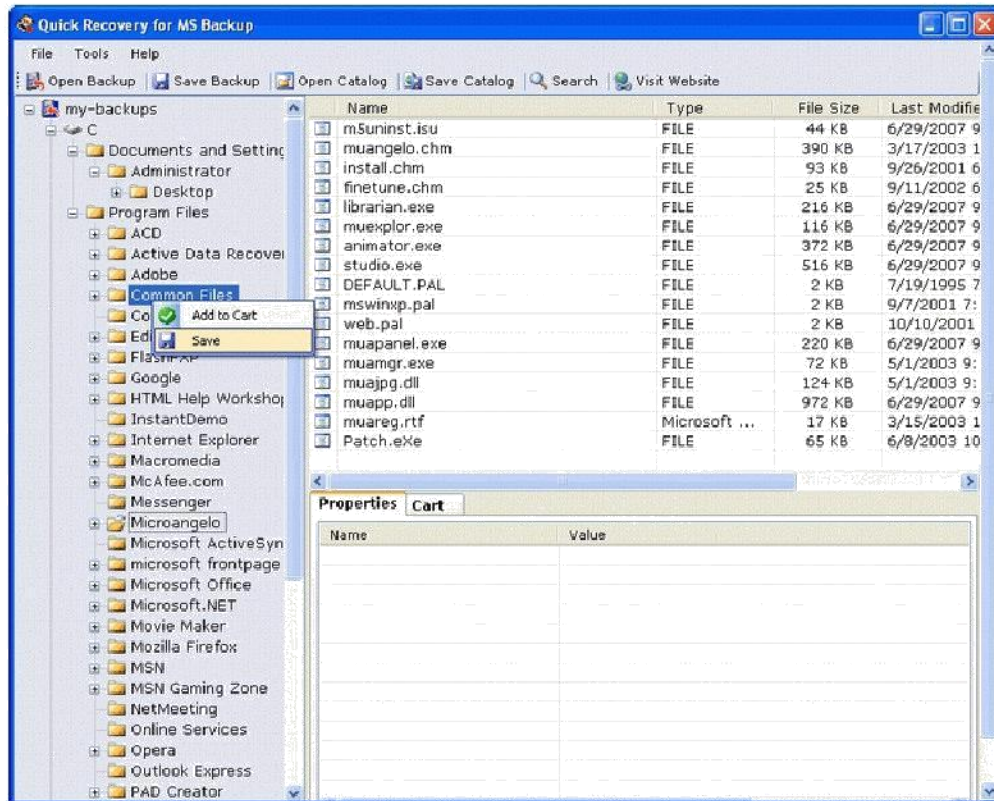
Right click the mouse button and choose Save to file system.

Software then ask to browse the location to save the selected files.



## Saving Whole Directory or Folder

Quick Recovery for MS Backup supports to save whole directory or folder. Save folder or directory as follows:



Select the directory or folder from the left pane of the above window.

Right click the mouse button and choose Save.

Software then ask to browse the location to save the selected files

## **Some concepts and Myths - many don't know.**

Switch off the computer as soon as data is lost, whatever reason it may be. Users still keep working on it thinking they will recover it later.

A file deleted from a folder is physically present there and only its entry from FAT/MFT is reset. The deleted file will be there until it is overwritten. Even if you copy some data to another folder, this deleted file may get overwritten! A folder may be somewhere and files under it may be somewhere else, they are linked by the FAT/MFT.

Viruses may infect a computer today, but they affect harm on the system many days later or even years later. They require this time for spreading themselves. Some people think that their system has crashed because a virus came at that time only. Not all viruses corrupt data files. Most viruses corrupt only system files and partition etc.

Data can be recovered in such instances too.

When a disk does not boot, using Fdisk to create new partition will not bring data back. This will cause even more damage to data.

People think data cannot be recovered after formatting a disk or changing partition. High level formatting will only reset the FAT and root directory on the disk, but data area remains intact, only to be recovered by experts like us.

The recovery CD provided by many computer manufacturers is not for recovering data, but only for automatically formatting the disk and automatically re-installing the operating system etc.

## **MS Backup Versions Supported**

- MS Backup with bkf files (i.e. 95, 97, 2000, 2002 & 2003)

## **System Requirements**

- Windows NT/2000/XP/2003 Server/Vista/ Windows 7/Windows 8/ Windows 10
- 800MHz processor or higher.
- RAM:
  - 256 MB (Windows XP)
  - 1 GB (Windows Vista, Windows 7 & Windows 8, Windows 10)
- 50 MB available hard disk space

## Frequently asked Questions

How does QUICK RECOVERY work? What is the funda?

QUICK RECOVERY is a data recovery software. It bypasses the operating system, calculates the system parameters internally, and searches for data heuristically. After a brief analysis QUICK RECOVERY reports the percentage of recovery and files that can be recovered.

If my computer is not booting, then how can QUICK RECOVERY access it?

QUICK RECOVERY is to be run after booting the computer using a bootable floppy. Then QUICK RECOVERY bypasses the system area of the disk and physically searches for data

Why cannot QUICK RECOVERY recover 100% data from large deleted files?

When files are deleted, they are not removed from their physical location but their links (FAT chain) get zeroed up. So if large files are fragmented, then their chain cannot be reconstructed. Smaller files are mostly stored contiguously and are not fragmented, so they can be recovered.

Why cannot QUICK RECOVERY recover 100% data from formatted disks?

The reason is the same as above. After formatting, the FAT links get fully zeroed. Moreover if files and folders have been copied after formatting, then nothing can be retrieved.

Why cannot we recover the files on the same partition?

This is because, the lost files when recovered on the damaged partition may overwrite the lost files, and hence the recovery may not be authentic or 100%.

What is the difference between Quick Recovery and Crash Proof?

As you know that prevention is better than cure. Crash Proof is a data loss prevention software, Data can be revived 100% and is guaranteed. This is because while installing, Crash Proof stores the critical system information. Whereas in case of Quick Recovery all these calculations have to be done by the software, hence the data recovery may not be 100% and is not guaranteed.