



QUICK RECOVERY FOR LOTUS NOTES-SERVER

[Quick Recovery for Lotus Notes-Server](#)

[Who Suffers most](#)

[Features](#)

[Recovery Steps](#)

[Recover and Repair](#)

[Recover and Repair Address Book](#)

[Repair and Undelete](#)

[Frequently Asked Questions](#)

According to independent studies, Lotus Notes is one of the most popular e-mail clients currently used. It offers functionality sufficient for handling e-mail messages from various mailboxes and some basic address book functionality. The one major thing Lotus Notes lacks is built-in data repair capability. Lotus Notes stores mails in NSF file on disk. As soon as a file gets damaged, due to software problem or for any other reason, there is no way to fix it and get your important messages back from within Lotus Notes. We understand how utterly frustrating it may be to lose your correspondence. That is why we are glad to offer you to try **Quick Recovery for Lotus Notes Server** Tool, the dedicated QR for Lotus Notes data recovery tool that may save your day!

Quick Recovery For Lotus Notes - Server - An automated & do-it-yourself mail recovery software capable of recovering and repairing Lotus Notes messages preserving the original folder structure. It can recover recently or accidentally deleted Lotus Notes messages. Its unique Guided File Excavation Technology (GFETch) helps in locating lost or corrupted messages.

Features Quick Recovery - Lotus Notes Server

- Quick and automated analysis.

- Supports Lotus Notes Server 6.0 & above.

- Repairs mails & addresses from NSF files, corrupted files damaged by any means or got deleted from the hard Disk.

- Recovers NSF files from the hard disk's particular partition which got deleted or formatted.

- Recovers & Repairs emails with their attachments and saves them to separate email messages (.TXT file) and as well as address books.

- Recovers emails from password protected NSF files and saves them as .TXT files.

- Recovered & Repaired NSF files (address books or mails) are generated in .txt format.

- Simple and well guided steps to recover emails.

- All recovery cases possible that have been experienced by Unistal have been incorporated.

100% data recovery and repair is possible if;

- Files are accidentally deleted.

- Header or footer is corrupted

- File summary, user or track information is corrupted

- Internal links are Intact.

QR For Lotus Notes (Server)

How Quick Recovery Works?

- Verify that the disk has Quick Recovery for Lotus installed in it.
- Run Quick Recovery for Lotus Notes
- Choose appropriate option for recovery or repairing.
- Select the NSF (for mails & address books) file, a particular partition or hard disk to be recovered.
- Give the path where recovered and repaired files to be saved. Click next, to start the recovery process.
- Your recovered & repaired files will be saved in .txt format, which can be imported back in Lotus.

Cause of Data Loss in Lotus Notes - Server

- Accidental deletion of .NSF file
- Deletion of mail
- Corruption of mail
- Not getting imported
- Archive not getting imported
- E-mails missing in a particular date range

Recovery Steps

1. Recover and Repair

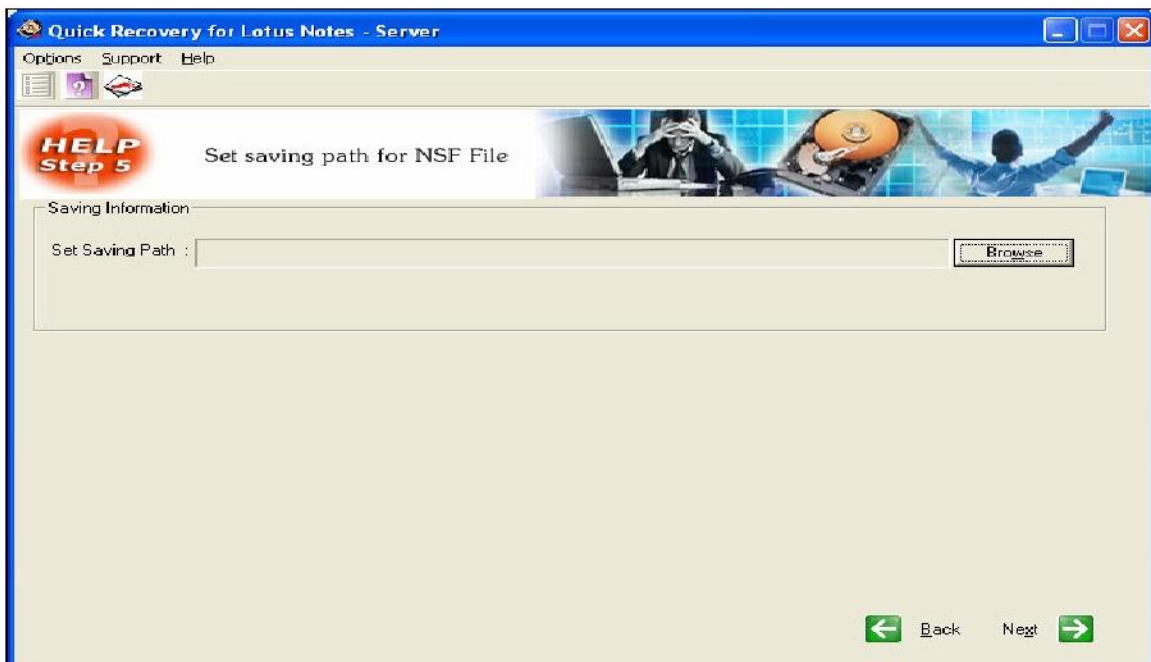
First select the disk from which you want to recover your mails then select "Recover and Repair" option then press Next button



Select the partition from which you want to recover your data and press next button



Specify the path where you want to save your data and press next button



QR for Lotus Notes - Server will search the entire partition for lost NSF file. And will save in a pre-defined location.

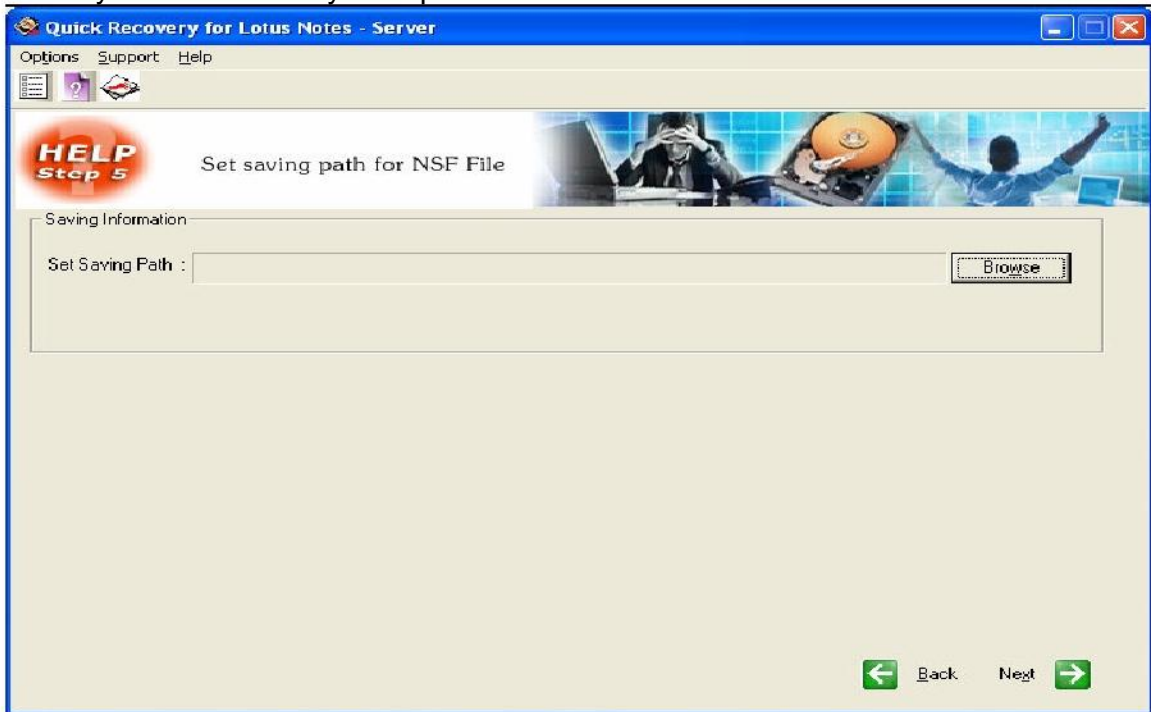


2. Recover and Repair Address Book

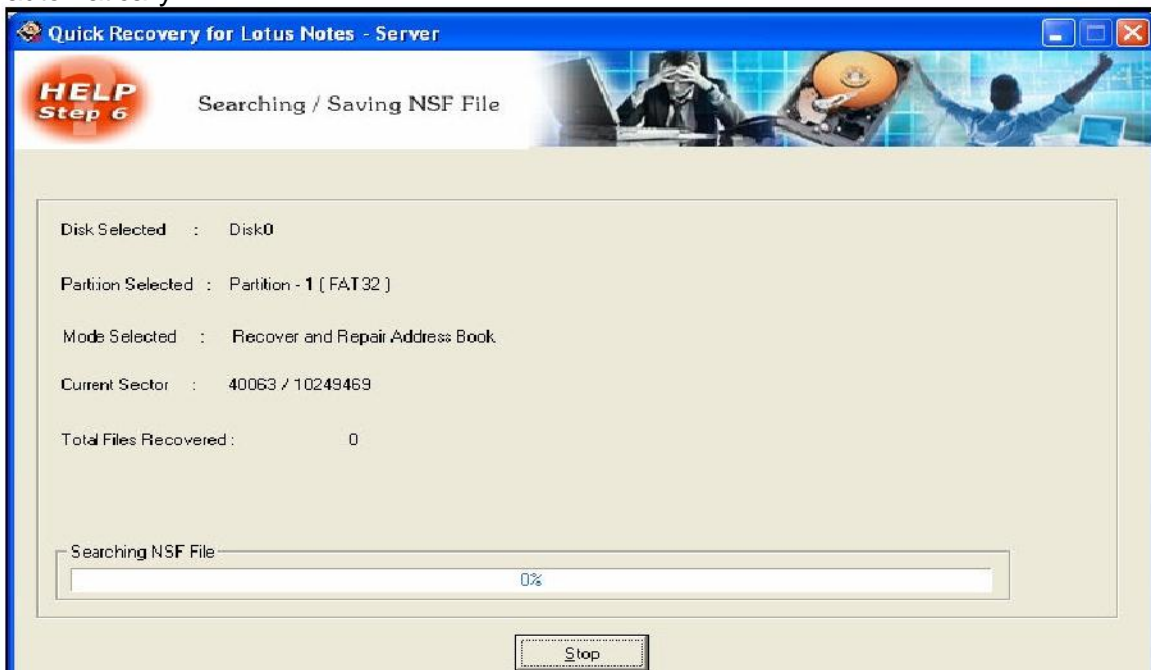
Select the disk from which you want to recover your data and select the "Recover and Repair Address Book" and then press next.



Select the partition where Lotus Address Book is located and then select the path where you want to save your repaired address book

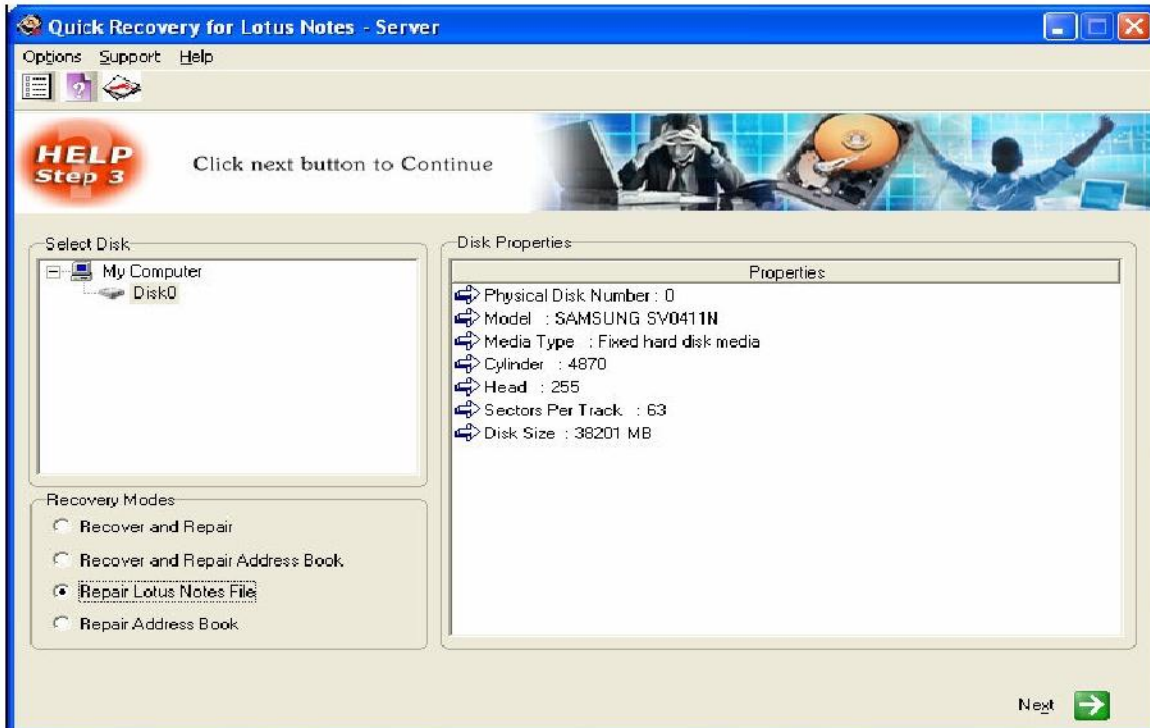


The process will start and QR for Lotus Notes - Server save the required data automatically

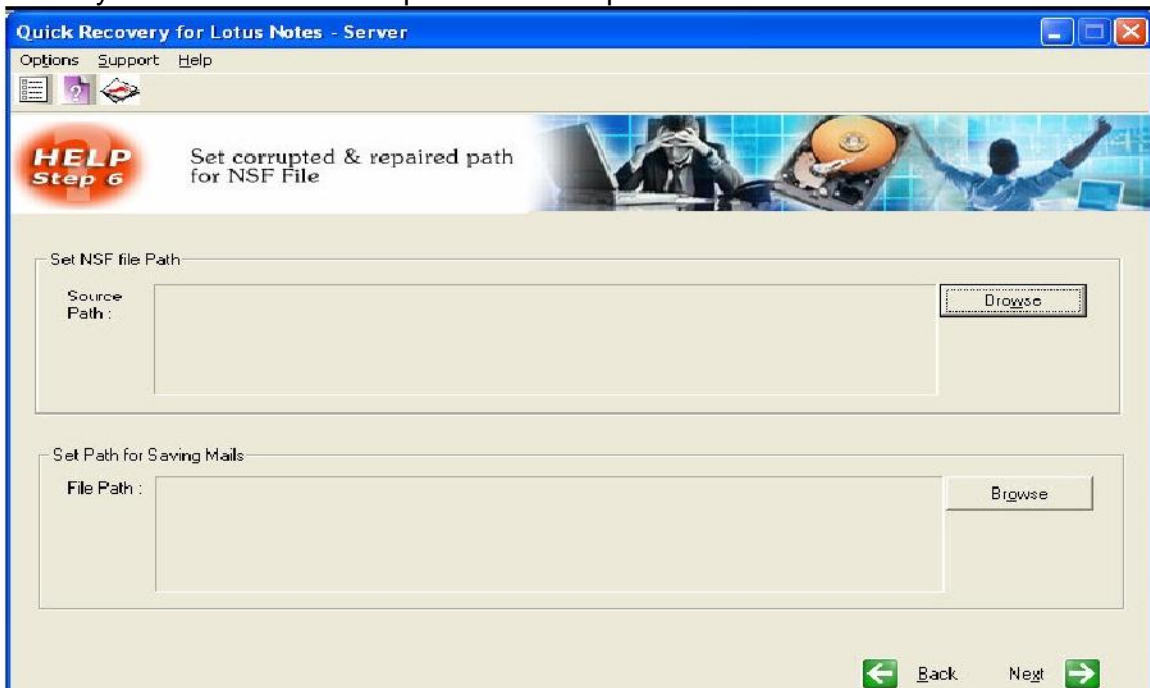


3. Repair Lotus Notes File

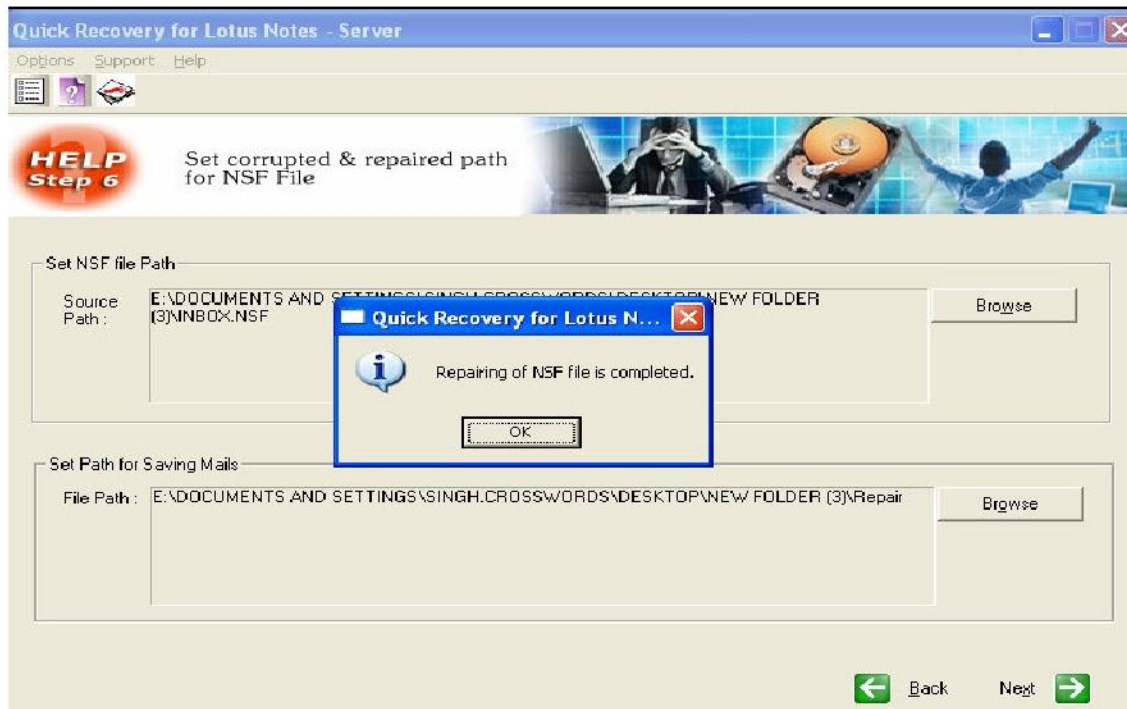
Select the Disk from which you want to recover your data and select "Repair Lotus Notes File"



Select the path where corrupted .NSF file is located and select the destination where you want to save the repaired file then press next



QR for Lotus Notes - Server will repair the corrupted .NSF file. Then you may import the repaired file to destination path.



4. Repair Address Book

All steps are same as 3rd option to repair the Lotus Notes - Server address book.

Limitations Quick Recovery for Lotus Notes

- Hard disk not detecting
- Media surface is completely damaged
- Corrupted files are overwritten
- Low level format is done
- Data Wipe is used to delete files



Lotus Notes Versions Supported

- Lotus Notes Domino Server 6.0 & above.

System Requirements

- Windows NT/2000/XP/2003 Server/Vista/ Windows 7 / Windows 8
- 800MHz processor or higher.
- RAM:
 - 256 MB (Windows XP)
 - 1 GB (Windows Vista, Windows 7 & Windows 8)
- 50 MB available hard disk space

FREQUENTLY ASKED QUESTIONS

In Lotus Notes - Server I cannot open a folder with a few thousand messages in it. Having installed QR for Lotus Notes - Server, I found that the program performs the process of message recovery very slowly. What can influence the performance rate of recovery?

QR for Lotus Notes uses a unique technology for recovering messages from the damaged Lotus Notes files and both the size of the file and the processing power of the computer influence the performance rate. Approximately the performance rate is 5 Mb/minute for a computer based on the P-III processor with 1GHz. You can install QR for Lotus Notes - Server on a computer with high processing rates and copy the damaged .NSF files to it for recovery. It does not influence the recovery rates whether the folders have been previously compacted or not.