



QUICK RECOVERY FOR DBASE

QUICK RECOVERY FOR DBASE

Operation steps

Who Suffers most

Features

100% data recovery is possible if

Recovery Modes

Frequently asked Questions

Quick Recovery for Dbase

Quick Recovery for Dbase recovers corrupted Dbase (Database) files which get corrupted due to unexpected software crash, unexpected system shutdown, virus attacks or error reading media where documents are stored. It is a professional file repair tool to repair corrupt FoxPro databases, dBase database file. During repairing process a complete scan of the damaged database is performed to locate and extract the recoverable information from the database. After complete scanning, the database contents which are recoverable are shown in the preview window. You can then easily save the recovered results as a working dbf database file. Its unique Guided File Excavation Technology (GFETch) helps in locating files and folders lost behind overwritten partitions too.

FEATURES

- Quick and Automated Analysis with Simple & Well guided steps to recover & repair DBF files

- Recovers deleted DBF files from crashed & formatted HDD Repairs Corrupt DBF table

- Repair .DBF files with memo or binary data fields stored in DBT files. Support for batch repairing of DBF files

- All recovery cases possible that have been experienced by Unistal have been incorporated

- All recovery cases possible that have been experienced by Unistal have been incorporated

- Unique Guided File Excavation Technology (GFETch) used

100% data recovery and repair is possible if;

- Files are accidentally deleted.

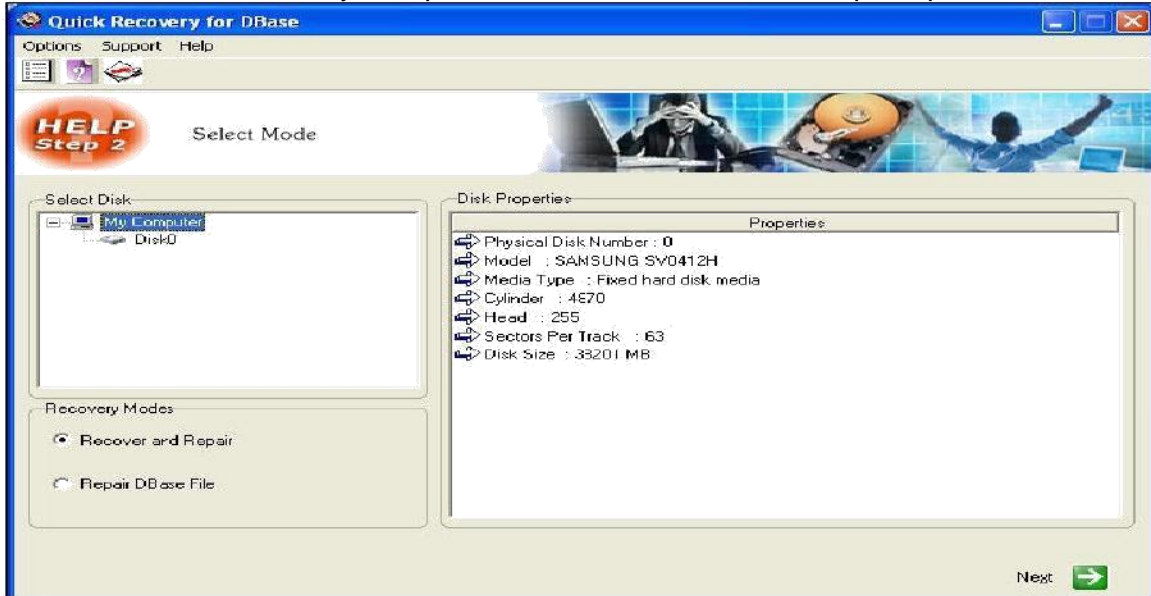
- Header or footer is corrupted

- File summary, user or track information is corrupted internal links are Intact

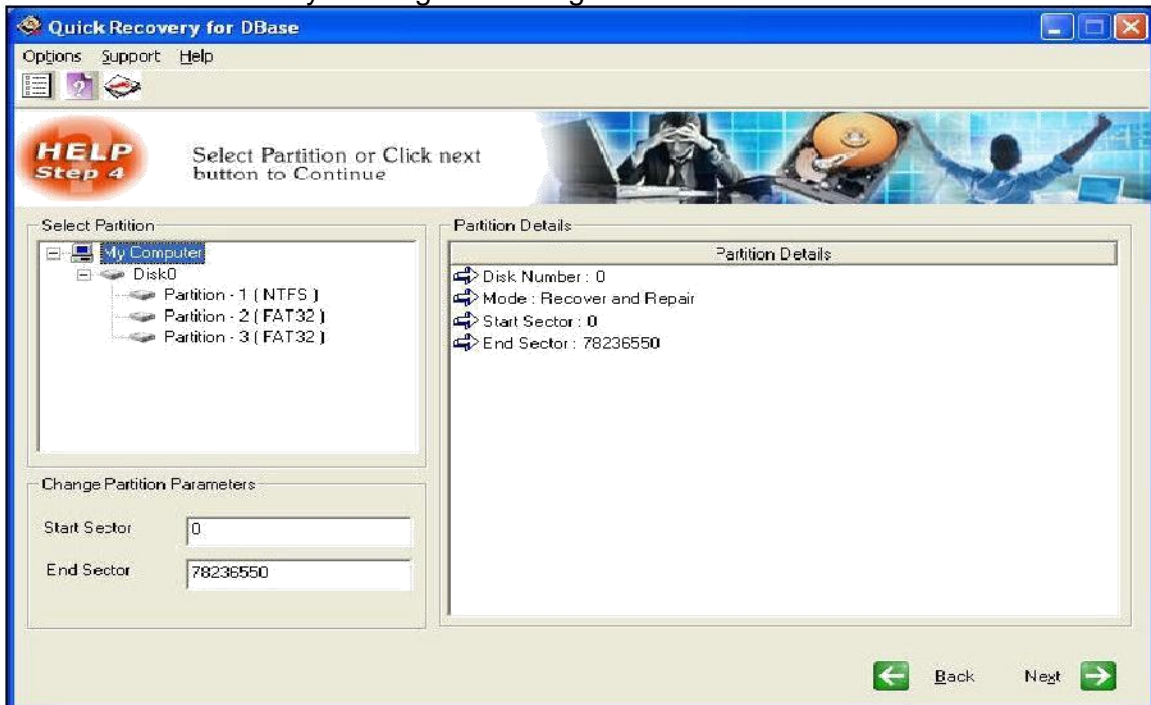
Recovery Modes

Using Recover and Repair option

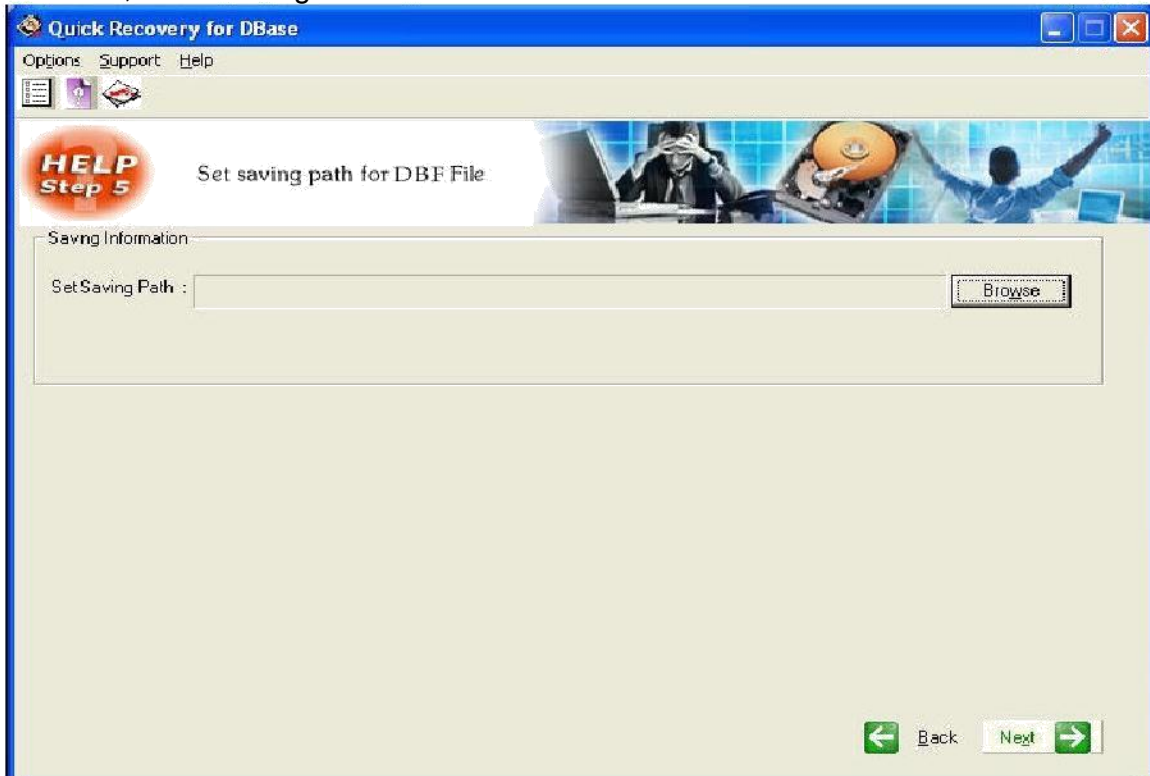
Select Hard Disk under My Computer and select Recover and Repair option.



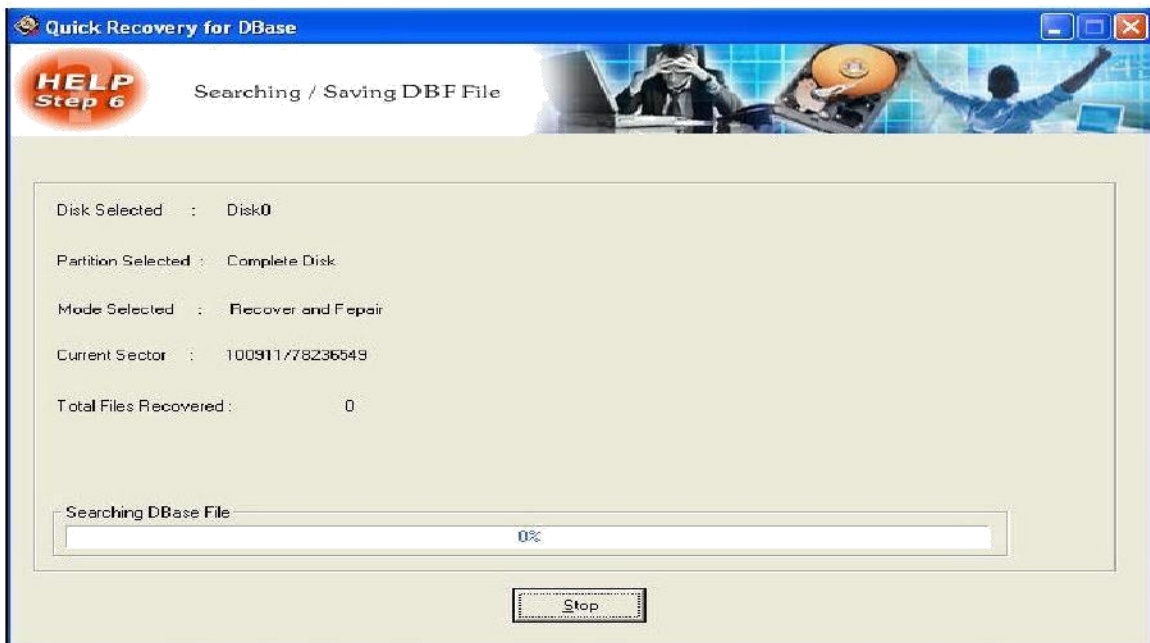
Click Next button and you will get following screen



Select the partition where you want to search .DBF file(s). You can also change the search range by modifying Start Sector and End Sector. After selecting partition click Next button. In the next screen (shown below), select path to save data from .DBF file, found during raw search.



Click Next button to start searching / Saving mails as shown in screen below



Using Repair DBase file option

Select Repair DBase File option from first screen and click next button to continue. In the next screen (shown below) select corrupted and repaired path for .DBase file



Click Next button to continue. If destination doesn't exist then QR will ask to create folder. Data from .DBF will be extracted in .txt file. If you want to create Repair folder then click on yes otherwise use Browse button to select different folder. In the next screen as shown below select corrupted and repaired path for DBase file



Click Next button to continue. If destination doesn't exist then QR will ask to create folder for Repaired file.

Database Versions Supported

- FoxBASE, FoxPro, Visual FoxPro, dBase III, dBase IV, dBase 5 for dos, dBase 5 for Windows etc.

System Requirements

- Windows NT/2000/XP/2003 Server/Vista/ Windows 7/Windows 8/ Windows 10
- 800MHz processor or higher.
- RAM:
 - 256 MB (Windows XP)
 - 1 GB (Windows Vista and Windows 7/Windows 8/ Windows 10)
- 50 MB available hard disk space

FREQUENTLY ASKED QUESTIONS

How does QUICK RECOVERY work?

QUICK RECOVERY is a data recovery software. It bypasses the operating system, calculates the system parameters internally, and searches for data heuristically. After a brief analysis QUICK RECOVERY reports the percentage of recovery and files that can be recovered.

If my computer is not booting, then how can QUICK RECOVERY access it?

QUICK RECOVERY is to be run after booting the computer using a bootable floppy. Then QUICK RECOVERY bypasses the system area of the disk and physically searches for data

Why cannot QUICK RECOVERY recover 100% data from large deleted files?

When files are deleted, they are not removed from their physical location but their links get zeroed up. So if large files are fragmented, then their chain cannot be reconstructed. Smaller files are mostly stored contiguously and are not fragmented, so they can be recovered.

Why cannot QUICK RECOVERY recover 100% data from formatted disks?

The reason is the same as above. After formatting, the links get fully zeroed. Moreover if files and folders have been copied after formatting, then nothing can be retrieved.

Why cannot we recover the files on the same partition?

This is because, the lost files when recovered on the damaged partition may overwrite the lost files, and hence the recovery may not be authentic or 100%.